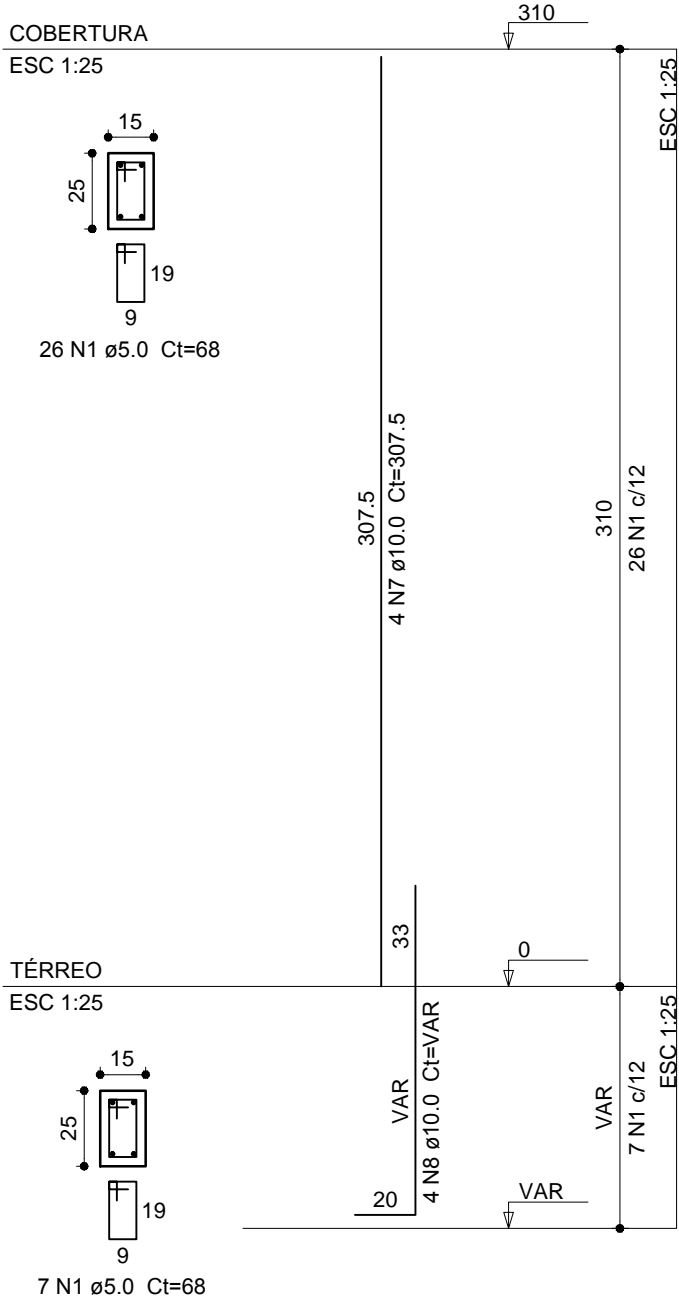
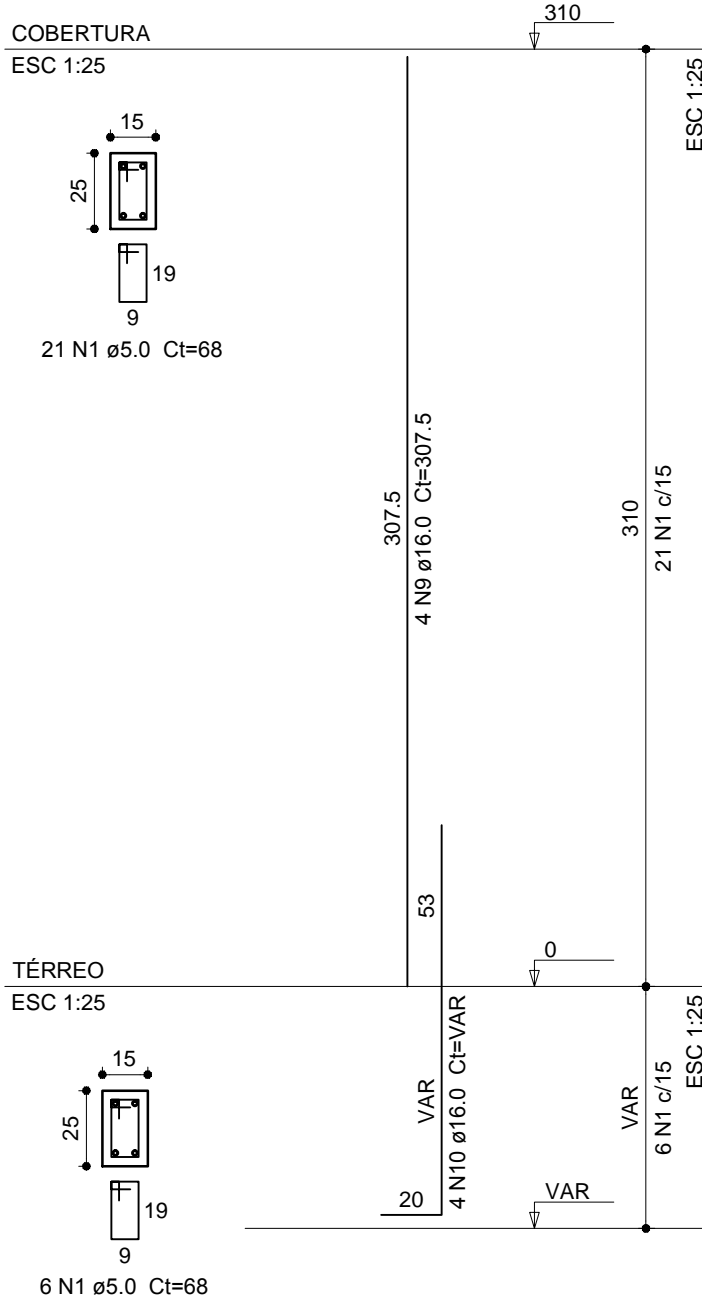


P1=P2=P3=P12=P17=P24=P25=P26



P4=P27



Relação do aço

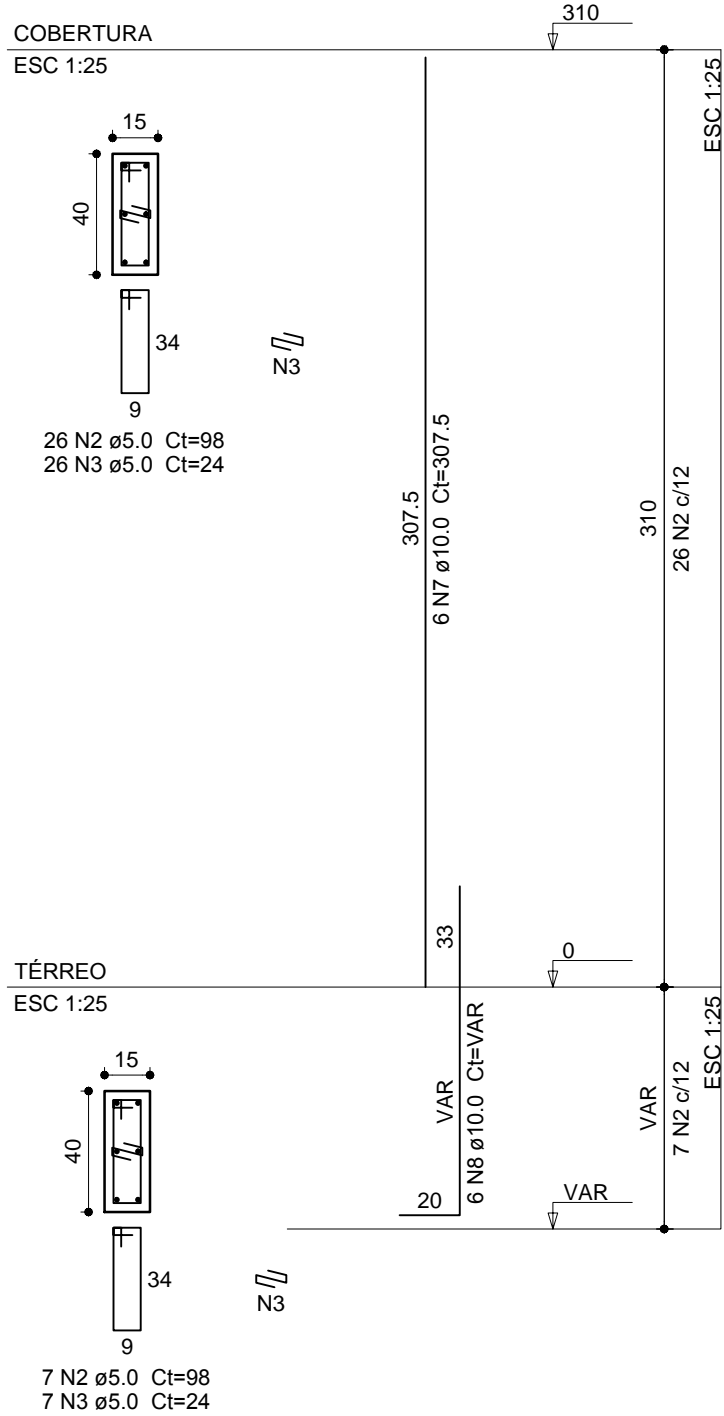
AÇO	N	DIAM (mm)	QUANT	C.UNIT (cm)	C.TOTAL (cm)
CA60	1	5.0	318	68	21624
	2	5.0	462	98	45276
	3	5.0	462	24	11088
	4	5.0	66	68	4488
	5	5.0	33	108	3564
	6	5.0	33	29	957
CA50	7	10.0	130	307.5	39975
	8	10.0	130	VAR	VAR
	9	16.0	8	307.5	2460
	10	16.0	8	VAR	VAR

Resumo do aço

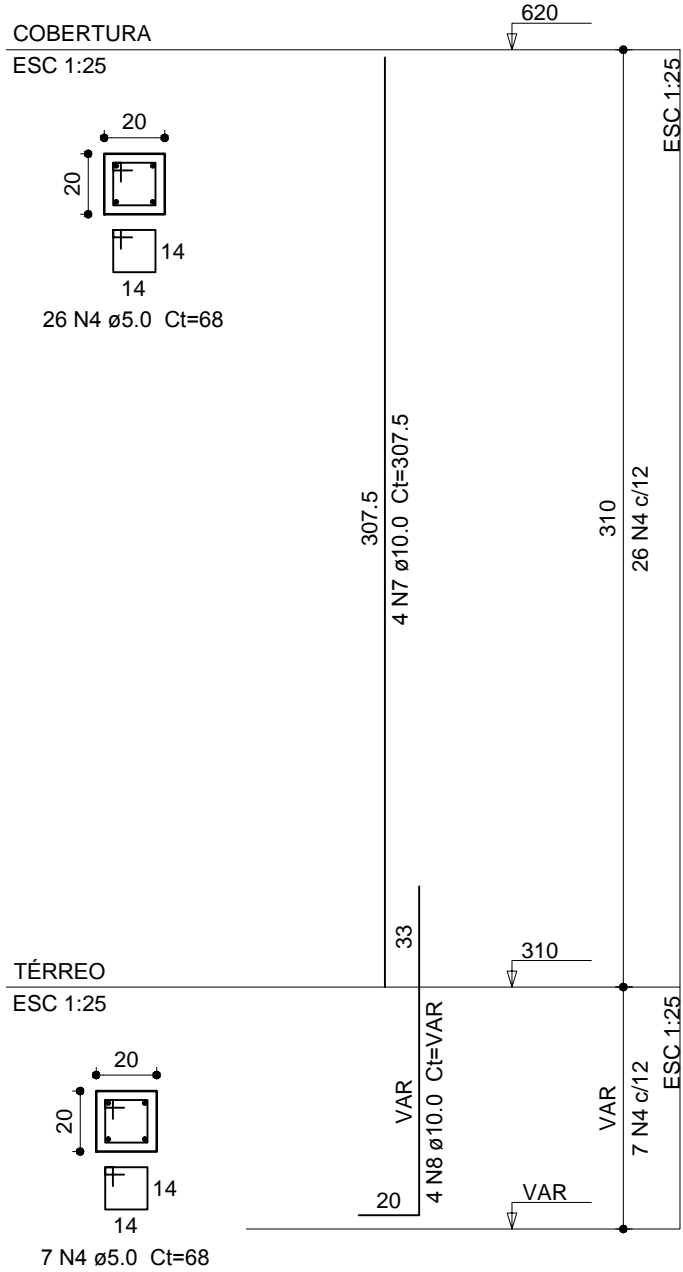
AÇO	DIAM (mm)	C.TOTAL (m)	PESO + 10 % (kg)
CA50	10.0	565	383.5
CA60	5.0	870	63.0
PESO TOTAL (kg)			
CA50	446.5		
CA60	147.5		

Volume de concreto (C-30) = 5.36 m³  
Área de forma = 102.18 m²

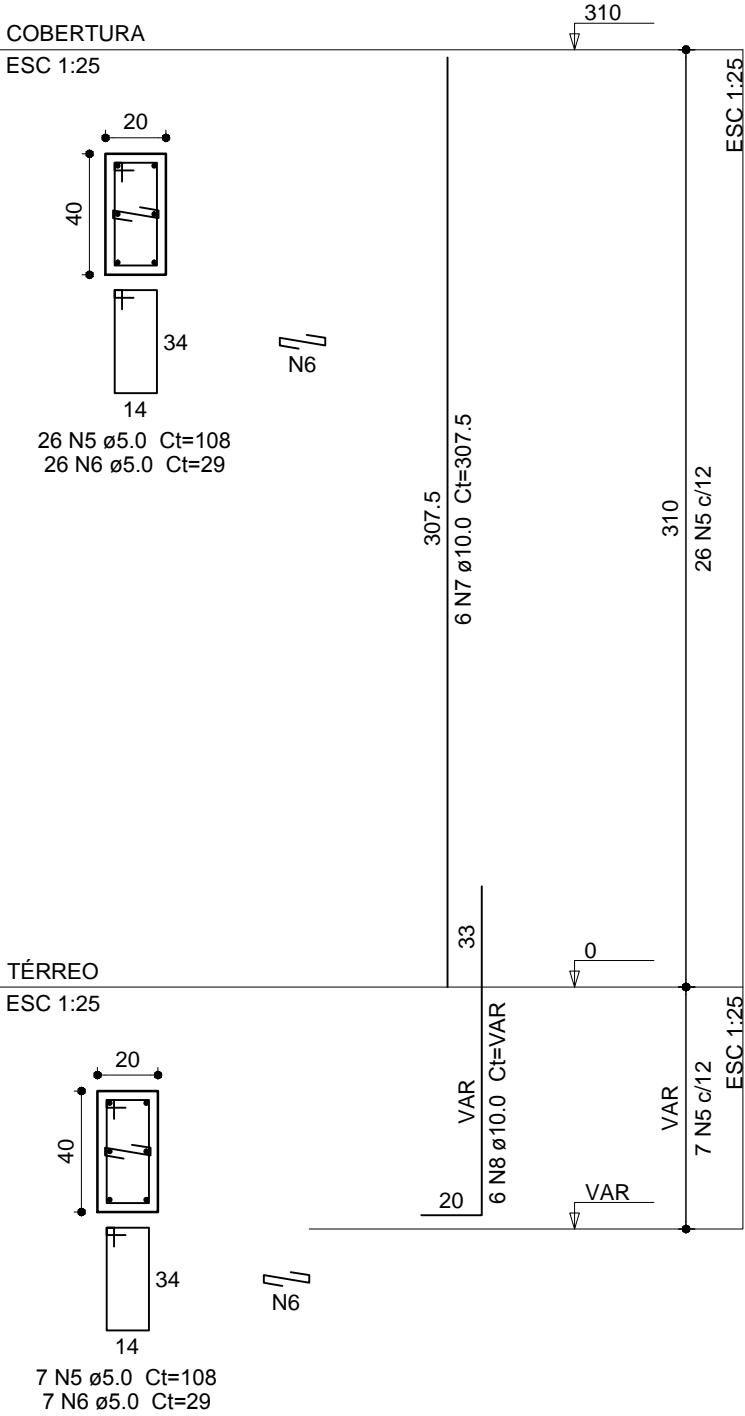
P5=P6=P7=P8=P9=P10=P13=P14=P18=P19=P20=P21=P22=P23



P11=P16



P15



PREFEITURA MUNICIPAL DO RIO GRANDE  
SECRETARIA DE MUNICÍPIO DE COORDENAÇÃO E PLANEJAMENTO

AMPLIAÇÃO E REFORMA E.M.E.F  
PORTO SEGURO  
RUA DAS ALGAS, 340, RIO GRANDE | RS

SMCP  
04.2016

ESTRUTURAL OBRA 2  
PILARES

MICHELE SCHNEIDER  
Engenheira Civil - CREA RS 202803

EVERTON MENA LOPES  
Engenheiro Civil - RS 166622

05/07

ESC. 1:25